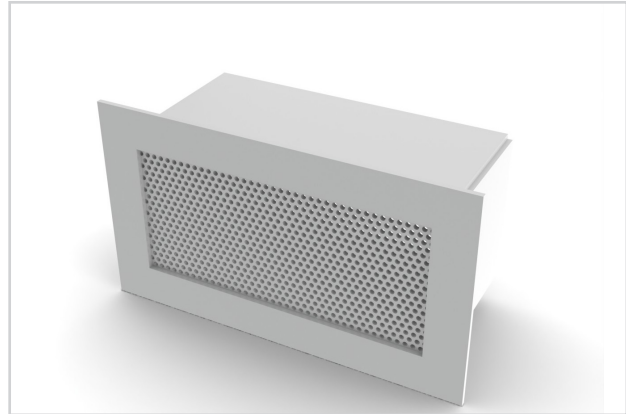


SG-SD

- Face plate: $\frac{3}{16}$ " steel with $\frac{3}{16}$ " diameter holes on $\frac{9}{32}$ " staggered centers and 1" border
- Sleeve: $\frac{3}{16}$ " steel
- All welded construction



SG-SD

Complies with NIC Guidelines for Suicide Prevention and California Title 24



metric sizes suicide deterrent maximum security

 See website for Specifications

MODELS:

- SG-SD / Steel
- SG-SD-SS / Stainless Steel

FINISHES:

- Standard Finish - #26 White
- Optional Finish - #04 Mill

OVERVIEW

Suicide Deterrent

The SG-SD is a maximum security grille. The design of this grille allows a greater effective free area and superior airflow without compromising security and safety. The SG-SD complies with National Institute of Corrections guidelines for suicide prevention and California Title 24.

OPTIONS

- Angle Frame - $1\frac{1}{2}$ " x $1\frac{1}{2}$ " x $\frac{3}{16}$ " steel angle iron shipped loose for field welding. Frame is mill finish.
- Anchor Bars - $\frac{3}{4}$ " diameter steel bars, 3" in height. Positioned 3" from back of face plate on top and bottom of sleeve
- Rear Operated Damper - AG-15 steel opposed blade damper. Slot operated from rear of the grille.
- Sleeve Barrier Grille - constructed of $\frac{3}{4}$ " diameter steel bars with maximum 6" opening